

UNITED STATES MARSHALS SERVICE

Office of Emergency Management



Strategic National Stockpile Program

RSS & TARU Security Considerations

Contact Information

John Shell
Senior Inspector

Office: (678) 916-4173

Cell: (404) 391-5913

E-Mail: atn2@cdc.gov

Security Challenge

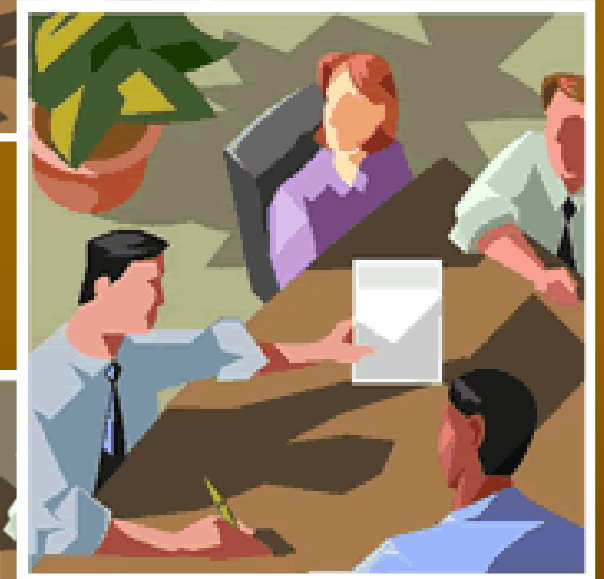
The terrorist enemy that we face is highly determined, patient, and adaptive. In confronting this threat, protecting our critical infrastructures and key assets represents an enormous challenge. We must remain united in our resolve, tenacious in our approach, and harmonious in our actions to overcome this challenge and secure the foundations of our Nation and way of life.

President George W. Bush
The National Strategy for the Physical Protection
of Critical Infrastructures and Key Assets
February 2003

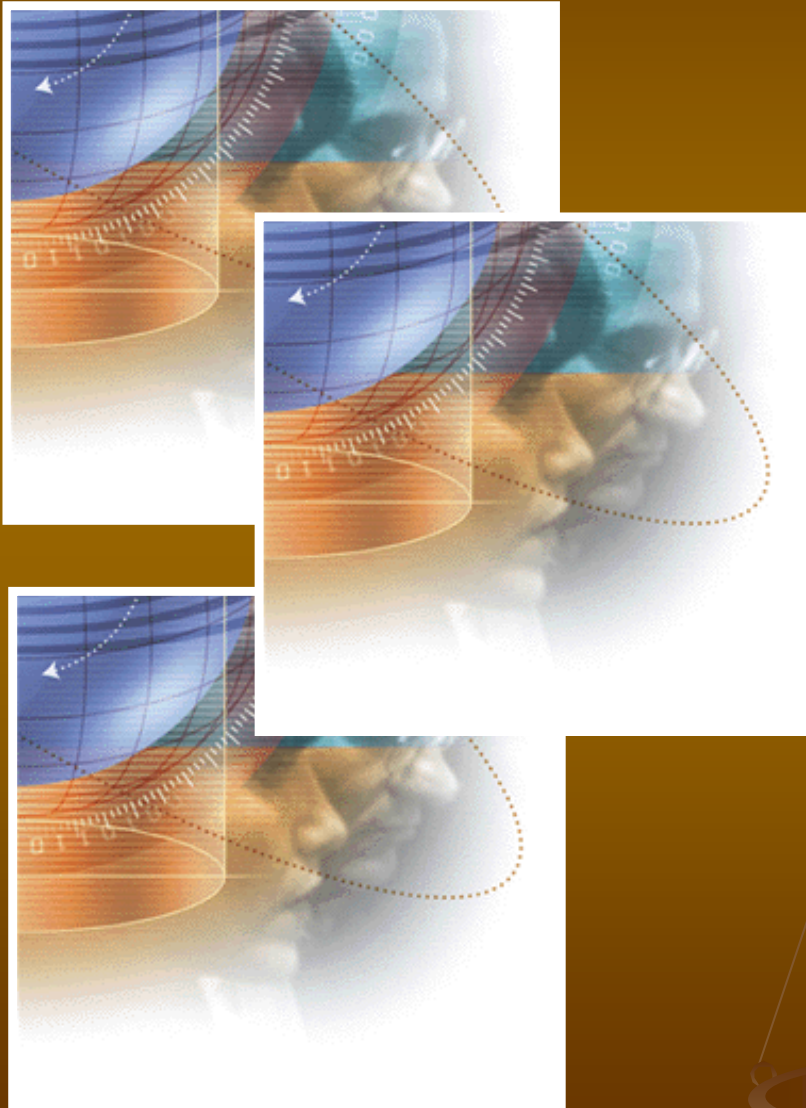


Today's Agenda

1. Chain-of-Command
2. RSS Assessment
 - A. TARU Requirements
 - B. Physical Security Measures
 - 1) Access Control;
 - 2) Perimeter and Interior Protection;
 - 3) Intrusion Detection; and
 - 4) SNS Asset Protection



Today's Agenda (cont.)



4. SNS Pre-Deployment Issues
 - A. Media Activity
5. TARU Transportation Issues
 - A. Airport to RSS
 - B. Evacuation Preparedness & Resources

Unity & Chain of Command

1. USMS personnel serve as the principal liaison to federal, state and local law enforcement on all Strategic National Stockpile (SNS) security matters.

A. Who from the state is ultimately responsible for all RSS physical security matters?



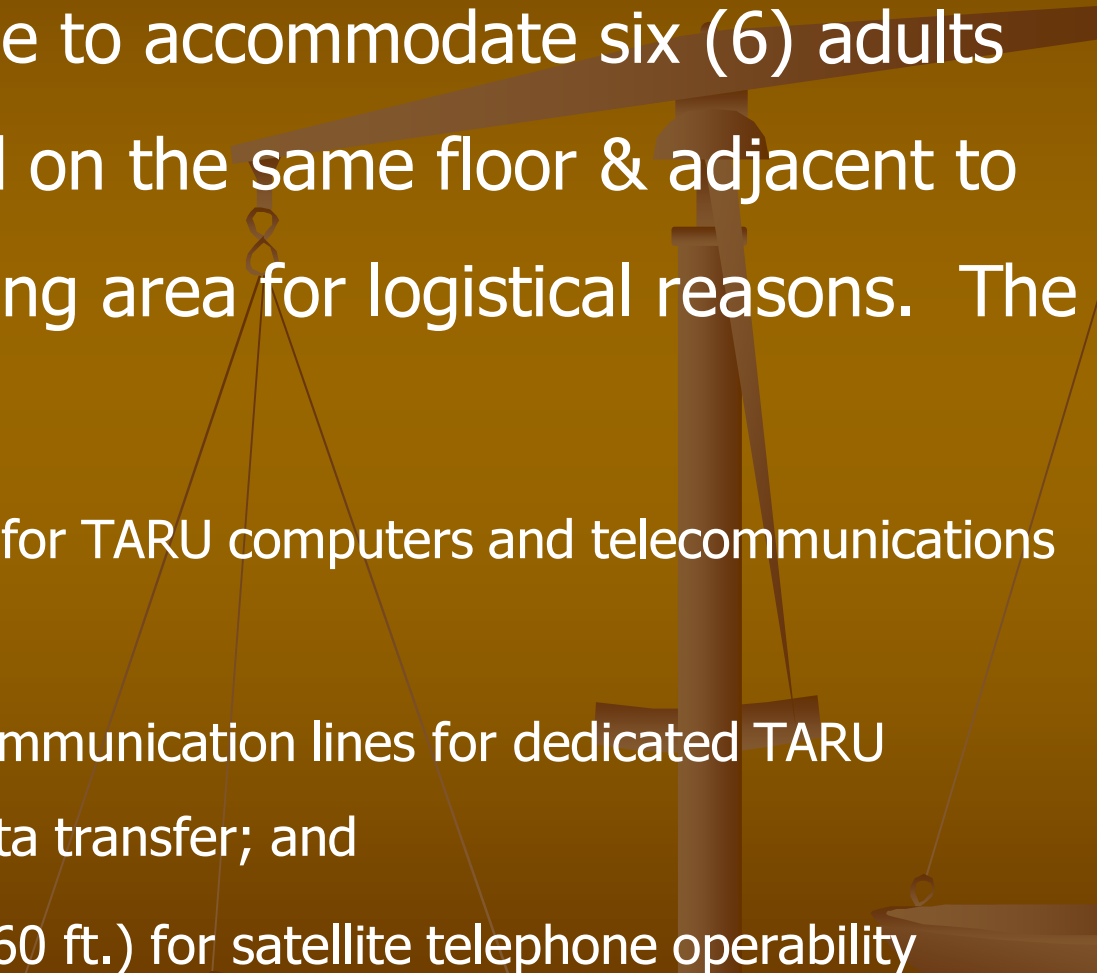
RSS Assessment

TARU Requirements



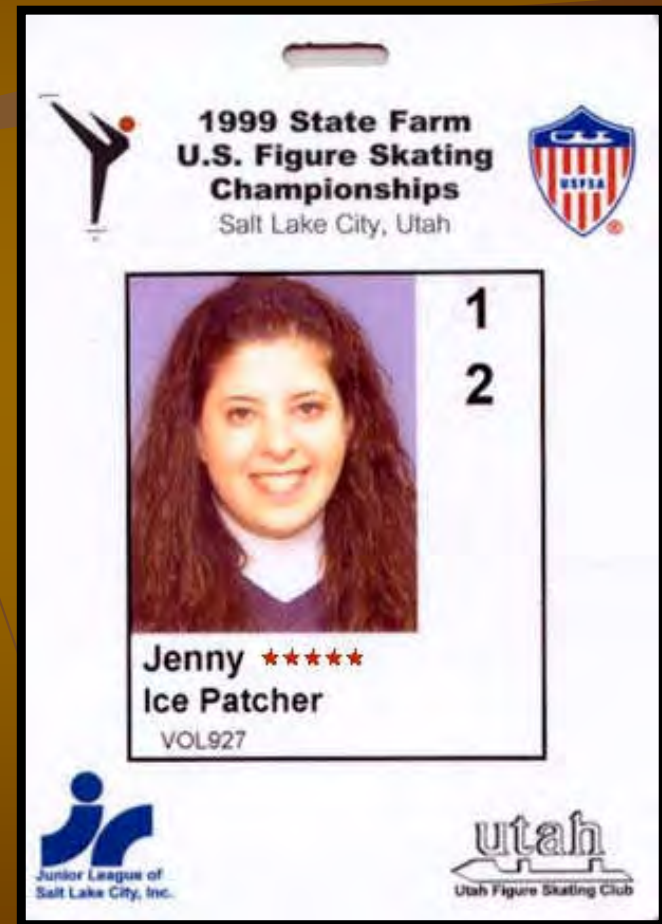
1. The proposed RSS must have a fire suppression system, i.e., sprinkler system, fire extinguishers, etc., for use in an emergency

RSS Assessment

- 
2. Separate office space to accommodate six (6) adults and must be located on the same floor & adjacent to the warehouse staging area for logistical reasons. The space must have:
 - A. ample electrical power for TARU computers and telecommunications equipment;
 - B. three (3) analog telecommunication lines for dedicated TARU telephone; fax; and data transfer; and
 - C. access to a window (<60 ft.) for satellite telephone operability

RSS Physical Security Measures

1. Access Control
 - A. Delineates who is authorized to access the RSS warehouse
 - B. Credentialing should be set-up and conducted at a site *away* from the RSS facility



RSS Physical Security Measures

2. Perimeter and Interior Protection
 - A. Should consist of a chain-link fence or some other type of physical barrier to prevent the public and/or vehicles from gaining access to the inner perimeter;



Perimeter and Interior Protection

- B. Perimeter should be well-lighted to permit the positive identification of persons, places, and things; and
- C. Should encompass the inner perimeter with a buffer zone of at least 300 to 1,000 feet to reduce potential damage from a car bomb or other incendiary device



Intrusion Detection



- A. All entry points should be guarded / secured
- B. Establish Roving Patrols
- C. Establish a Vehicle Control Zone
 1. *At least 300 – 1,000 feet from RSS warehouse to reduce/eliminate potential bomb threat*

SNS Asset Protection

1. The USMS is fully responsible for the protection of the “Push Package” until it transitions to the state.
 - A. The state must be prepared to assume security of the medical materiel at that time
 1. *Have you identified adequate security resources to accomplish that mission?*

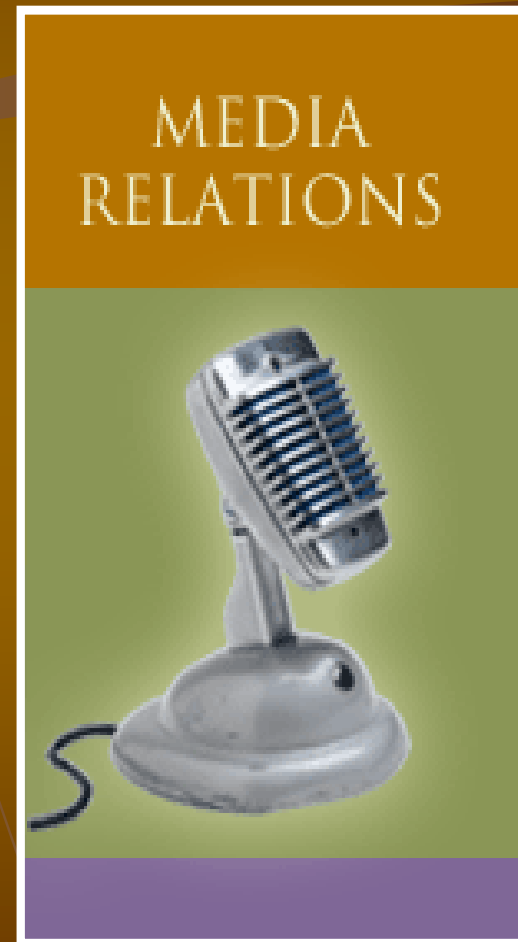


SNS Pre-Deployment Issues

2. Media Activity

- A. A direct correlation exists between the amount of media coverage and public reaction to a crisis

1. *Is it necessary for state authorities to brief members of the media on the location of the RSS?*



TARU Transportation Issues

1. Transportation from Airport to RSS
 - A. Readily available and identified prior to arrival
2. Aircraft Security
 - A. Secure Area; and
 - B. LEO presence
 1. *Possibility exists of multiple catastrophic events*
 2. *Sample may need to be transported to CDC for further testing*



Evacuation Preparedness & Resources

1. A possibility exists that you may need to evacuate the RSS. Are you prepared to accomplish this task?



2. Things to consider
 - A. Communications
 1. *How will staff and/or volunteers know when to evacuate the facility?*
 - B. Pre-determined Rally Point
 1. *Do staff and/or volunteers know where to meet if evacuated?*
 - C. Transportation to Rally Point
 1. *How will your staff and/or volunteers get to the designated Rally Point?*

On Plans and Planning



**“The Plan is
nothing,
planning is
everything”**

**(General Dwight David
Eisenhower, Commander in
Chief, Allied Forces, Europe)**

United States Marshals Service

Thank you!

Are there any questions?